



# NVIDIA Quadro® Professional Solutions for HP

## The Revolutionary Visual Computing Solution



	Model	WORKSTATION						MOBILE WORKSTATION			BUSINESS NOTEBOOK	AMO KIT	DISPLAY					PERFORMANCE			IMAGE QUALITY	FEATURES			OPTIONS			
		HP xw4550	HP xw4600	HP xw6400	HP xw6600	HP xw8400	HP xw8600	HP xw9400	HP Compaq 8510w	HP Compaq 8710w	HP Compaq 9440w	HP Compaq 8710p	HP Compaq nx9420	After Market Option	Dual-Link DVI	# of Digital Outputs	# of Analog Outputs	Analog <sup>1</sup> and Digital	Maximum Display Resolution Digital @ 60Hz	Memory Size Total	Memory Bandwidth	Relative Performance Score <sup>2</sup>	FSAA (maximum)	Shader Model	NVIDIA® SLI™ Support	C Programming Environment	SDI	G-Sync
Quadro Plex	VISUAL COMPUTING SYSTEM	Model S4 (4 x Quadro FX 5600)					✓	✓						N/A	N/A	N/A	N/A	N/A	6 GB	76.8 GB/sec		64x	4.0	✓	✓	N/A	N/A	
		Model IV (2 x Quadro FX 5600)					✓	✓							4	2	2	✓	2560 x 1600	3 GB	76.8 GB/sec		64x	4.0	✓	✓		II
		Model II (4 x Quadro FX 4500)					✓	✓							2	2	2	✓	2560 x 1600	2 GB	33.6 GB/sec		64x	3.0	✓			I
Quadro FX	ULTRA-HIGH END	Quadro FX 5600					✓	✓					✓	2	2	2	✓	2560 x 1600	1.5 GB	76.8 GB/sec	46	32x	4.0	✓	✓	✓	II	
		Quadro FX 5500					✓	✓					✓	2	2	2	✓	2560 x 1600	1 GB	33.6 GB/sec	39	16x	3.0	✓		✓	I	
		Quadro FX 4600		✓	✓	✓	✓	✓	✓					✓	2	2	2	✓	2560 x 1600	768 MB	67.2 GB/sec	43	32x	4.0	✓	✓	✓	II
	HIGH-END	Quadro FX 3500		✓	✓		✓	✓						✓	2	2	2	✓	2560 x 1600	256 MB	42.2 GB/sec	31	12x	3.0	✓			
		Quadro FX 1700	✓	✓			✓	✓						✓	2	2	2	✓	2560 x 1600	512 MB	12.8 GB/sec	36	32x	4.0		✓		
	MID-RANGE	Quadro FX 1500			✓		✓	✓						✓	2	2	2	✓	2560 x 1600	256 MB	40.0 GB/sec	27	8x	3.0				
		Quadro FX 570	✓	✓		✓	✓	✓						✓	2	2	2	✓	2560 x 1600	256 MB	12.8 GB/sec	28	16x	4.0		✓		
		Quadro FX 560			✓		✓							✓	1	2	2	✓	2560 x 1600	128 MB	19.2 GB/sec	24	8x	3.0				
	ENTRY-LEVEL	Quadro FX 370	✓	✓		✓	✓							✓	1	2	2	✓	2560 x 1600	256 MB	6.4 GB/sec	22	16x	4.0		✓		
		Quadro FX 1600M								✓						2	2	✓	17"	512 MB	25.6 GB/sec	^^	8x	4.0		✓		
Quadro FX 1500M										✓					2	2	✓	17"	512 MB	38.4 GB/sec	^^	8x	3.0					
Quadro NVS	QUAD DISPLAY	Quadro NVS 440 x16			✓	✓									2	2	✓	15.4"	256 MB	22.4 GB/sec	^^	8x	4.0		✓			
		Quadro NVS 290	✓	✓		✓	✓	✓						✓	2	2	✓	1920 x 1200	256 MB	6.4 GB/sec			4.0					
		Quadro NVS 285 x16			✓		✓	✓						✓	2	2	✓	1920 x 1200	128 MB	4.8 GB/sec			3.0					
	MOBILE	Quadro NVS 510M										✓																
Quadro NVS 320M											✓																	

<sup>^</sup> Quadro Plex certified platforms. Available from NVIDIA.com

<sup>^^</sup> Mobile Workstation performance will vary based on CPU options; please see www.spec.org for details

1 Maximum Display Resolutions: Analog VGA 2048 x 1536 @ 60Hz

2 Relative performance score represents the geometric mean of the viewperf viewsets and is intended to provide a relative performance difference. Application scaling may vary. SPECviewer® 9.0: for more information visit spec.org.

# Which NVIDIA GPU solution is best for my environment?



High Performance Computing (HPC) Applications



## Professional Applications & Solutions



Consumer/Entertainment Applications

**PROFESSIONAL BUSINESS APPLICATIONS**  
Display and Analytics

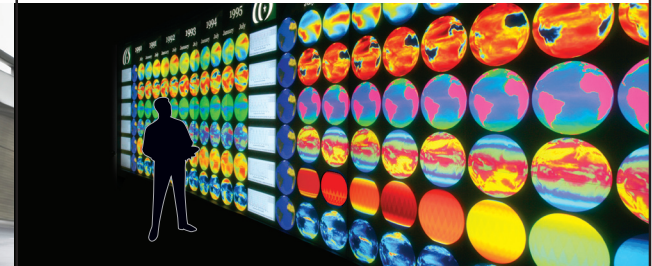
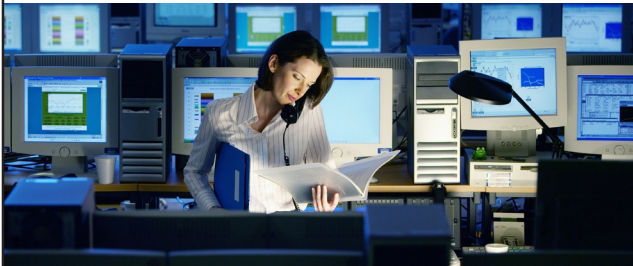
**QUADRO NVS**  
The Standard for Business Graphics.

**PROFESSIONAL 3D APPLICATIONS**  
Design, Creation, Visualization

**QUADRO FX**  
The Definition of Performance. The Standard for Quality.

**PROFESSIONAL INDUSTRY SOLUTIONS**  
HD, Broadcast, Large Scale Visualization

**QUADRO PLEX, SDI & G-SYNC**  
Architected for Industry Specific Solutions.



For more information on NVIDIA and NVIDIA Quadro products, visit [www.nvidia.com](http://www.nvidia.com)

© 2007 NVIDIA Corporation. NVIDIA, the NVIDIA logo, NVIDIA Quadro, and SLI are trademarks and/or registered trademarks of NVIDIA Corporation. All rights reserved. All company and product names may be trademarks or registered trademarks of the respected owners with which they are associated. Features, pricing, availability, and specifications are subject to change without notice.

